

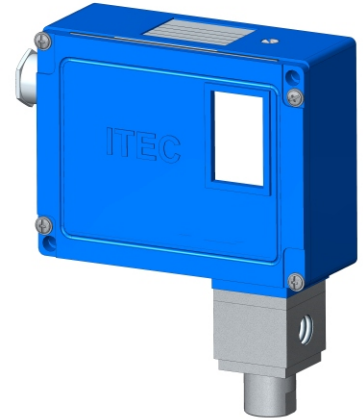
## FEATURES

- Fix / adjustable differential
- Field adjustable set point
- Weatherproof to IP 67
- Internal set point lock
- Rigid construction
- Scale provided

## APPLICATION

- Marine applications
- Textile machineries
- Power & steel plants
- Furnace applications
- Oil & Gas, Refineries
- Petro-chemicals & Fertilizers
- Cement & Glass industries
- Railway engines & Turbines

HP / LP port



### STANDARD SPECIFICATIONS

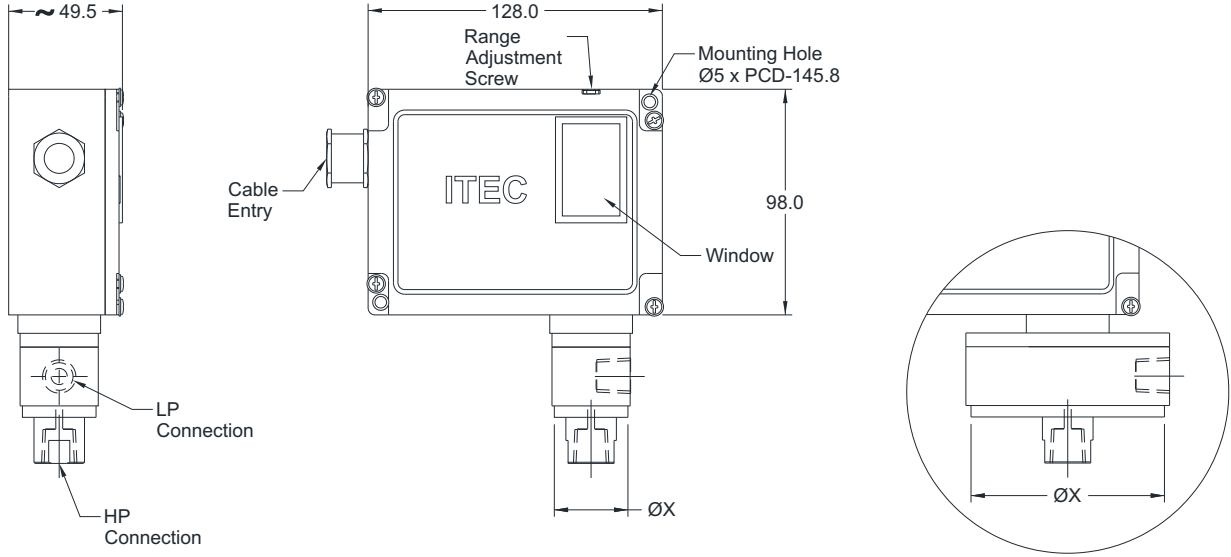
Repeatability	:	± 0.5 % F.S
Scale accuracy	:	± 1% F.S
Measurement unit	:	bar
Range	:	Refer "Range Table"
Range adjustment	:	External
Differential	:	Fixed (Standard), Adjustable (Optional)
Mounting	:	Bottom / Panel
Enclosure material	:	Aluminum pressure die cast
Sensing elements	:	SS 316 Diaphragm
Switch	:	1 SPDT Snap action micro switch
Switch rating	:	15A,250 VAC / 0.2A,24 VDC (Standard)
Process connection	:	1/4" NPT (F) x 2 Nos.
Maximum process temperature	:	150 °C
Ambient temperature	:	-10...60 °C
Cable entry	:	PG.13.5 mm
Set point	:	Between 20 to 80 % F.S for better performance
High voltage strength	:	0.5 to 0.6 KV between open contacts and 2 K V between contact and body

### RANGE TABLE

CODE	RANGE "mbar"	CODE	RANGE "bar"
D17	5...60	B02	0.1...1
D19	10...100	B04	0.2...2
D24	25...250	B06	0...4
D29	50...600	B07	0.6...6
		B09	1...10
		B11	1...16
		B13	2...25

DIMENSIONAL DRAWING

S1 External Range Setting



All dimensions are in mm

Chamber Size	
Range	ØX
5 mbar to 600 mbar	80 mm
1 bar to 25 bar	45 mm

MICROSWITCH SPECIFICATION

DESCRIPTION	RATING	RATING	DIFFERENTIAL	TYPE	SWITCH CODE	
	AC	DC			1 No.	2 Nos.
Low deadband / differential	15A/250V, 2A/24V 0.2A/220V	15A/250V, 2A/24V 0.2A/220V	Fix	SPDT	M10	M20
High dead band / differential	15A/250V, 6A/24V 0.25A/220V	15A/250V, 5A/24V 0.03A/220V	Adjustable	SPDT	M11	-
Gold plated switch	1A/250V	0.5A/28V	Fix	SPDT	M13	M23
Environmentally sealed silver contact	5A/28V	-	Fix	SPDT	M14	M24
Hermetically sealed silver contact	3A/28V	2A/24V	Fix	SPDT	M16	-
Hermetically sealed gold contact	1A/125V	-	Fix	SPDT	M17	-
DPDT	10A/125V, 0.2A/250V	-	Fix	DPDT	M08	-

## ORDERING CODES

### 1. RANGE

Refer "Range Table"

**B02**

### 2. CHAMBER MATERIAL

- NF** AISI 316 SS
- NN** Monel K-500
- NO** Hastelloy C-276

**NF**

### 3. SENSING ELEMENT MATERIAL

- DF** AISI 316 SS
- DN** Monel K-500<sup>3</sup>
- DO** Hastelloy C-276<sup>3</sup>
- D2** PTFE (Teflon)

**DF**

### 4. RANGE ADJUSTMENTS

- S1** Range adjustments, External

**S1**

### 5. SWITCHING DIFFERENTIAL

- S4** Fixed
- S5** Adjustable

**S4**

### 6. SET POINT

- S8** On Raising
- S9** On Falling

**S8**

### 7. MICROSWITCH TYPE

Refer table "Microswitch Specification"

**M10**

### 8. CABLE ENTRY

- J8** PG 13.5 cable entry
- J9** DIN connector
- C0** 3/4" ET (F), 1 No.
- C1** 1/2" NPT (F), 1 No.
- C4** 4 Pin Connector
- C7** 7 Pin Connector

**J8**

### 9. PROCESS CONNECTION

- 02B** 1/4" BSP (F)
  - 12B** 1/4" BSP (M)
  - 13B** 3/8" BSP (M)
  - 14B** 1/2" BSP (M)
  - 12N** 1/4" NPT (M)
  - 14N** 1/2" NPT (M)
  - 04N** 1/2" NPT (F)
  - A25** 1.5" RF 150#
  - A26** 1.5" RF 300#
  - A27** 1.5" RF 600#
  - A31** 2" RF 150#
  - A32** 2" RF 300#
  - A33** 2" RF 600#
- HP & LP connections are through adaptors.
- HP side through adaptors & LP side through capillary adaptors.

**02N**

### 10. OTHER OPTIONS

- TB** Calibration Certificate
- XF** AISI 304 SS tag plate
- XV** Wall mounting bracket
- XS** Mounting bracket with 2" U-clamp
- TC** Material test certificate 3.1
- KE** Cable gland, double compression weatherproof, Ni-plated brass

**XX**

**Ordering Example : S202-B02-NF-DF-S1-S4-S8-M10-J8-02B**

## COMPATIBLE ACCESSORIES

Diaphragm seal	Gauge cock	Needle Valves
Cooling tower	Snubber	Manifolds
Siphon		

### NOTES:

1. The option "TC" covers only wetted parts.
2. Cable gland is available in other materials, contact factory.
3. Supplied with diaphragm seal.