

## FEATURES

- Weld-Pad connection
- Mineral insulated
- Transmitter mountable
- Exchangeable insert
- Spring loaded design

## APPLICATION

- Refineries
- Oil & gas application
- Surface temperature of refractory lined vessels
- Petrochemicals Plant
- Skin Temperature of Heater Tube

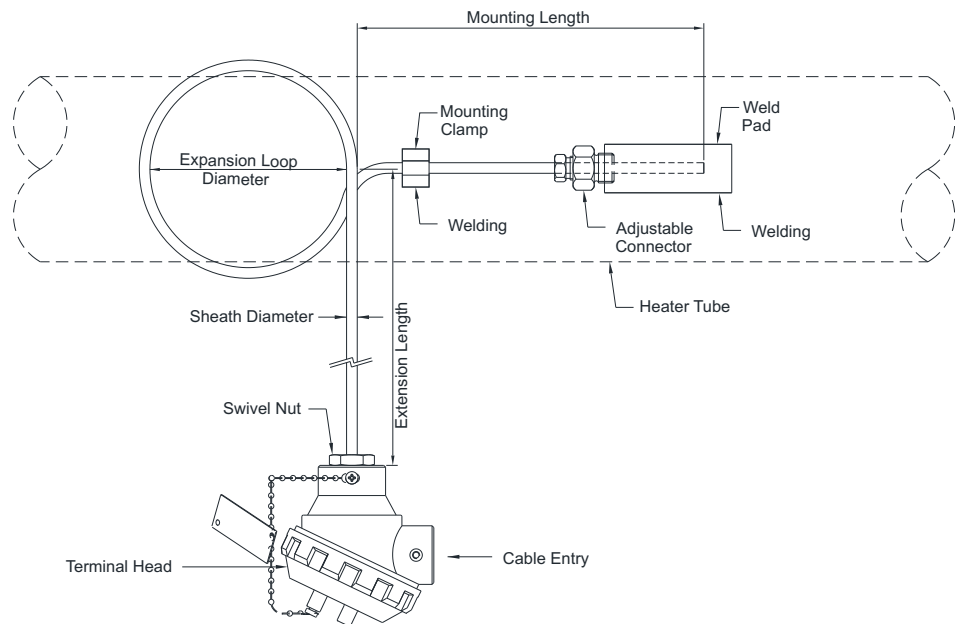
### Weldpad Mounting



### STANDARD SPECIFICATIONS

Element	:	Type K (NiCr-Ni)
Accuracy	:	Standard to ISA & ANSI MC96.1
No. of sensors	:	Simplex
Hot junction	:	Ungrounded
Sheath material	:	AISI 316 SS
Sheath diameter	:	6.0 mm
Terminal head type	:	Threaded, weatherproof, IP-65
Terminal head material	:	Die-cast Aluminum
Cable entry	:	3/4" ET (F), 1 No.
Mounting Type	:	Bracket Mounting for Head
Weld Pad Size	:	25 mm X 25 mm X 50 mm
Weld Pad Material	:	AISI 316 SS
Total Length	:	3000 mm

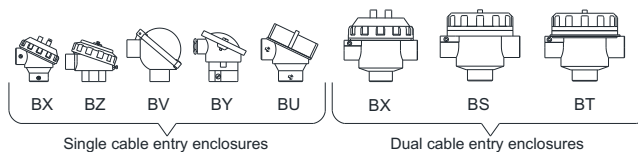
### DIMENSIONAL DRAWING



NOTE :- TOTAL LENGTH = Extension Length + Perimeter of Expansion Loop + Mounting Length

## REFERENCE

IEC-584.2 / ANSI MC-96.1



## ORDERING CODES

## 1. ELEMENT

<b>K</b>	Type K (NiCr-Ni)
<b>J</b>	Type J (Fe-CuNi)
<b>N</b>	Type N (NiCrSi-NiSi)
<b>E</b>	Type E (NiCr-CuNi)
<b>T</b>	Type T (Cu-CuNi)
<b>R</b>	Type R (Pt-13%Rh/Pt)
<b>S</b>	Type S (Pt-10%Rh/Pt)
<b>B</b>	Type B (Pt/30%Rh-Pt/6%Rh)

## 2. ACCURACY

<b>P</b>	Standard	<b>Q</b>	Special
----------	----------	----------	---------

## 3. NO. OF SENSORS

<b>V</b>	Simplex	<b>W</b>	Duplex
<b>X</b>	Triplex		

## 4. HOT JUNCTION

<b>G</b>	Grounded	<b>U</b>	Ungrounded
----------	----------	----------	------------

## 5. SHEATH MATERIAL

<b>MF</b>	AISI 316 SS	<b>MG</b>	AISI 316L SS
<b>ME</b>	AISI 310 SS	<b>MQ</b>	Inconel 600

## 6. SHEATH DIAMETER

<b>M30</b>	3.0 mm	<b>M50</b>	5.0 mm
<b>M60</b>	6.0 mm	<b>M80</b>	8.0 mm

## 7. HEAD ENCLASURE

<b>BZ</b>	WP, IP 65, threaded cover
<b>BX</b>	WP, IP 67, threaded cover
<b>BS</b>	Flame proof, IP 67, Gr IIA, IIB
<b>BT</b>	Explosion proof, IP 67, Gr IIC
<b>BV</b>	WP, IP 65, Hinged type
<b>BY</b>	WP, IP 65, cover fitted with 2 screws
<b>BU</b>	Ex-Proof to CSA, FM, ATEX [EEx-d]

## 8. ENCLOSURE MATERIAL

<b>ML</b>	Die-cast aluminum		
<b>MC</b>	AISI 304 SS	<b>MF</b>	AISI 316 SS

## 9. CABLE ENTRY

<b>C0</b>	3/4" ET (F), 1 No.
<b>C1</b>	1/2" NPT (F), 1 No.
<b>C2</b>	M20 x 1.5mm (F), 1 No.
<b>C3</b>	3/4" NPT (F), 1 No.
<b>C5</b>	3/4" ET (F), 2 Nos.
<b>C6</b>	1/2" NPT (F), 2 Nos.
<b>C8</b>	M20 x 1.5mm (F), 2 Nos.
<b>C9</b>	3/4" NPT (F), 2 Nos.

## 10. MOUNTING TYPE

<b>B0</b>	Local mounting, no bracket
<b>B1</b>	Bracket mounting, for head
<b>B2</b>	2" Pipe mounting bracket
<b>B3</b>	Surface mounting, for JB

## 11. WELD PAD / INTEGRAL COLLAR SIZE

<b>W0</b>	Rectangle, 100 x 25 x 25 mm
<b>W1</b>	Rectangle, 100 x 50 x 50 mm
<b>W2</b>	Rectangle, 50 x 25 x 25 mm
<b>W4</b>	Integral collar, 30 x 19 x 10 mm
<b>W5</b>	Integral collar, 40 x 19 x 10 mm
<b>W6</b>	Integral collar, 50 x 19 x 10 mm

## 12. WELDPAD MATERIAL

<b>MF</b>	AISI 316 SS
<b>ME</b>	AISI 310 SS
<b>M6</b>	AISI 446 SS
<b>MQ</b>	Inconel 600

## 13. TOTAL LENGTH (TL)

<b>XXXXX</b>	50 mm up to 25,000 mm
--------------	-----------------------

## 14. OTHER OPTIONS

<b>TB</b>	Calibration Certificate
<b>XF</b>	Tag plate, AISI 304 SS
<b>KD</b>	SC, cable gland, Ni-brass WP
<b>KE</b>	DC, cable gland, Ni-brass WP
<b>KJ</b>	SC, cable gland, Ni-brass FP
<b>KK</b>	DC, cable gland, Ni-brass FP
<b>KF</b>	SC, cable gland, AISI 304 SS WP
<b>KG</b>	DC, cable gland, AISI 304 SS WP
<b>KL</b>	SC, cable gland, AISI 304 SS FP
<b>KM</b>	DC, cable gland, AISI 304 SS FP
<b>KH</b>	SC, cable gland, AISI 316 SS WP
<b>KI</b>	DC, cable gland, AISI 316 SS WP
<b>KN</b>	SC, cable gland, AISI 316 SS FP
<b>KO</b>	DC, cable gland, AISI 316 SS FP
<b>KB</b>	Plug fitting for CE, AISI 304 SS
<b>KC</b>	Plug fitting for CE, AISI 316 SS
<b>KU</b>	Plug fitting for CE, Aluminum
<b>KS</b>	SS base plate for transmitter
<b>KT</b>	Head mount transmitter

Ordering Example : T301-K-P-V-U-MF-M60-BZ-ML-C0-B1-W2-MF-3000

## NOTES:

- Other sheath diameters, connections are available, please contact factory for details.
- WP = Weatherproof, FP = Flame proof, SC = Single Compression, DC = Double Compression, CE = Cable Entry
- Transmitter output shall be 4...20 mA as standard, any other output required, please contact factory for details.