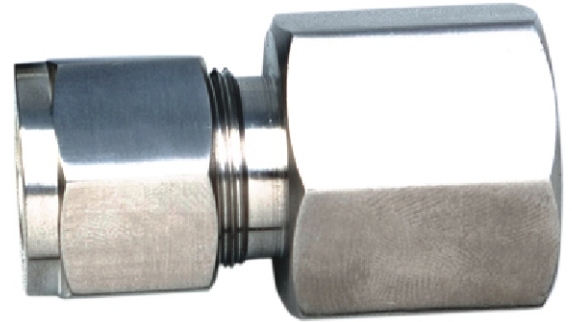


FEATURES

- Easy & low torque engagement
- Leak free assembly and reassembly
- Various patterns & connections
- Wide variety of materials



APPLICATION

- Oil & Gas industries
- Petrochemical / Chemical processing
- Shipbuilding & Heavy industrial industries
- Power generation, Pulp & paper industries
- Cryogenic & semiconductor industries
- Research laboratories

ORDERING CODES

1. TUBE & THREAD SIZE

CODE	Tube	Thread	CODE	Tube	Thread
Dimensions, mm			Dimensions, inch		
M60-02N	6	1/4" NPTF	I18-01N	1/8	1/8" NPTF
M60-04N	6	1/2" NPTF	I18-02N	1/8	1/4" NPTF
M80-02N	8	1/4" NPTF	I14-01N	1/4	1/8" NPTF
M80-04N	8	1/2" NPTF	I14-02N	1/4	1/4" NPTF
M10-02N	10	1/4" NPTF	I14-04N	1/4	1/2" NPTF
M10-04N	10	1/2" NPTF	I12-02N	1/2	1/4" NPTF
M12-02N	12	1/4" NPTF	I12-04N	1/2	1/2" NPTF
M12-04N	12	1/2" NPTF	I12-05N	1/2	3/4" NPTF
M16-04N	16	1/2" NPTF	I34-04N	3/4	1/4" NPTF
M20-04N	20	1/2" NPTF	I34-05N	3/4	3/4" NPTF
M20-05N	20	3/4" NPTF	I11-05N	1	3/4" NPTF
M22-05N	22	3/4" NPTF	I11-06N	1	1" NPTF
M22-06N	22	1" NPTF			
M25-05N	25	3/4" NPTF			
M25-06N	25	1" NPTF			

M60-02N

2. MATERIAL

MA	Brass
MC	AISI 304 SS
MD	AISI 304L SS
MF	AISI 316 SS
MG	AISI 316L SS
MM	Monel 400
MN	Monel K-500
MO	Hastelloy C-276

MA

Ordering Example : F301-M60-02N-MA

NOTES:

1. Change 10th character to B for BSP threads.
2. Change 10th character to M for Metric treads, check factory for details.
3. Minimum order quantity is 50 Nos.