

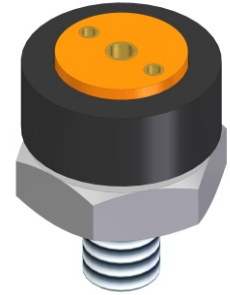
FEATURES

- Field adjustable set point
- Compact design
- Fixed differential
- 1 SPST contact

APPLICATION

- Earth movers
- OEM industries
- Lubrication industries
- Hydraulic equipments
- Pneumatic machineries
- Automobile applications

OEM Industry Applications



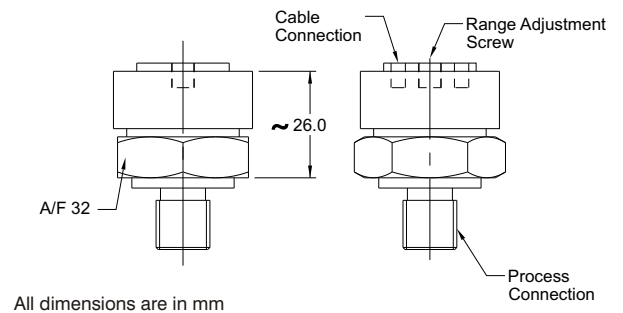
STANDARD SPECIFICATIONS

Repeatability	:	± 2% F.S
Measurement unit	:	bar
Range	:	Refer "Range Table"
Differential	:	Fixed
Mounting	:	Direct
Sensing elements	:	Diaphragm, Rubber
Switch	:	1 SPST (1 Normally Open contact - 1NO)
Electrical Supply	:	5A,220 VAC / 10A,24 VDC
Process connection	:	1/4"BSP(M), AISI 304 SS
Ambient temperature	:	-10...60 °C
Service temperature	:	80°C max.
Set point	:	External, Field adjustable

RANGE TABLE

CODE	Range "bar"
B09	1...10
B13	2...25
B16	4...40
B17	5...60

DIMENSIONAL DRAWING



ORDERING CODES

1. RANGE

Refer "Range Table"

B09

2. CONNECTION

12B 1/4" BSP (M)
14B 1/2" BSP (M)
13N 3/8" NPT (M)

13B 3/8" BSP (M)
12N 1/4" NPT (M)
14N 1/2" NPT (M)

12B

3. OTHER OPTIONS

TB Calibration Certificate
MA Connection in Brass / Cu-alloy

XF AISI 304 SS tag plate
MF Connection in AISI 316 SS

XX

Ordering Example : S101-B09-12B

NOTES:

1. Other connections are available through adaptors.