

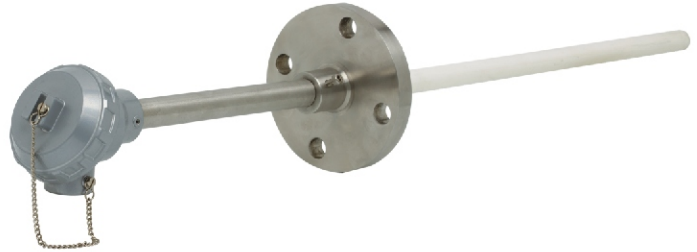
## FEATURES

- KER710 Material
- Ceramic Insulator
- Exchangeable insert
- Transmitter mountable
- Adjustable / Fixed connection
- Single / Double protecting tube

## APPLICATION

- Reactors
- Glass Industries
- Oil & gas application
- Sulfur recovery plants
- Steel & Power Industries
- Furnaces, Kilns & Ovens

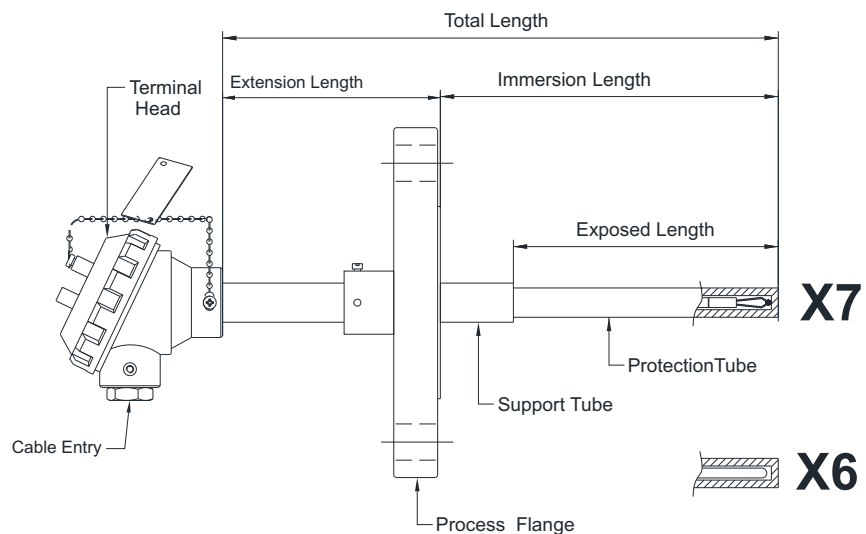
### Ceramic Protection Tubes



### STANDARD SPECIFICATIONS

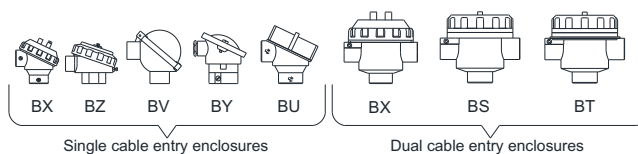
Element	:	Type R (Pt-13%Rh/Pt)
Element type	:	Element with ceramic insulators
Accuracy	:	Standard to ISA & ANSI MC96.1
No. of sensors	:	Simplex
Hot junction	:	Ungrounded
Wire diameter	:	24 AWG (0.404 mm)
Terminal head type	:	Screwed Type ,Weatherproof, IP-65
Terminal head material	:	Die-cast Aluminum
Cable entry	:	3/4" ET (F), 1 No.
Head extension type	:	Head only
Support tube material	:	AISI 446 SS
Protecting tube material	:	KER - 710, Recrystallised Alumina
Protecting tube size (OD X ID)	:	15 x 10 mm
Process connection type	:	Adjustable connection
Process connection	:	1.5" RF 150#
Process connection material	:	ASTM A 105 / Carbon Steel
Overall length / Exposed length	:	500 mm / 300 mm
Extension Length	:	100 mm

### DIMENSIONAL DRAWING



## REFERENCE

IEC-584.2 / ANSI MC-96.1



## ORDERING CODES

## 1. ELEMENT

<b>K</b>	Type K (NiCr-Ni)
<b>N</b>	Type N (NiCrSi-NiSi)
<b>R</b>	Type R (Pt-13%Rh/Pt)
<b>S</b>	Type S (Pt-10%Rh/Pt)
<b>B</b>	Type B (Pt/30%Rh-Pt/6%Rh)

## 2. ELEMENT TYPE

<b>X6</b>	Mineral insulated
<b>X7</b>	Element with ceramic insulator

## 3. ACCURACY

<b>P</b>	Standard
<b>Q</b>	Special

## 4. NO. OF SENSORS

<b>V</b>	Simplex
<b>W</b>	Duplex
<b>X</b>	Triplex

## 5. HOT JUNCTION

<b>G</b>	Grounded
<b>U</b>	Ungrounded

## 6. SHEATH MATERIAL

<b>MQ</b>	Inconel 600□
<b>XX</b>	Not applicable

## 7. SHEATH DIAMETER (For X6)

<b>M30</b>	3.0 mm
<b>M50</b>	5.0 mm
<b>M60</b>	6.0 mm
<b>M80</b>	8.0 mm
<b>M10</b>	10.0 mm
<b>M12</b>	12.0 mm

OR

## 7. SHEATH DIAMETER (For X7)

<b>W24</b>	24 AWG (0.511 mm)
<b>W25</b>	25 AWG (0.455 mm)
<b>W26</b>	26 AWG (0.404 mm)
<b>W27</b>	27 AWG (0.361 mm)

## 8. HEAD ENCLSURE

<b>BZ</b>	WP, IP 65, threaded cover
<b>BX</b>	WP, IP 67, threaded cover
<b>BS</b>	Flame proof, IP 67, Gr IIA, IIB
<b>BT</b>	Explosion proof, IP 67, Gr IIC
<b>BV</b>	WP, IP 65, Hinged type
<b>BY</b>	WP, IP 65, cover fitted with 2 screws
<b>BU</b>	Ex-Proof to CSA,FM,ATEX [Ex-d]

## 9. ENCLOSURE MATERIAL

<b>ML</b>	Die-cast aluminum
<b>MC</b>	AISI 304 SS
<b>MF</b>	AISI 316 SS

## 10. CABLE ENTRY

<b>C0</b>	3/4" ET (F), 1 No.
<b>C1</b>	1/2" NPT (F), 1 No.
<b>C2</b>	M20 x 1.5mm (F), 1 No.
<b>C3</b>	3/4" NPT (F), 1 No.
<b>C5</b>	3/4" ET (F), 2 Nos.
<b>C6</b>	1/2" NPT (F), 2 Nos.
<b>C8</b>	M20 x 1.5mm (F), 2 Nos.
<b>C9</b>	3/4" NPT (F), 2 Nos.

## 11. SUPPORT TUBE MATERIAL

<b>MF</b>	AISI 316 SS
<b>MG</b>	AISI 316L SS
<b>ME</b>	AISI 310 SS
<b>MQ</b>	Inconel 600

## 12. INNER PROTECTION TUBE

<b>P6</b>	KER - 610, Pythagoras
<b>P7</b>	KER - 710, Recrystallised Alumina

## 13. INNER PROTECTION TUBE SIZE

<b>T06</b>	Ø6 X 1.0 mm thk
<b>T08</b>	Ø8 X 1.5 mm thk
<b>T10</b>	Ø10 X 2.0 mm thk
<b>T12</b>	Ø12 X 2.0 mm thk

## 14. OUTER PROTECTION TUBE

<b>P6</b>	KER - 610, Pythagoras
<b>P7</b>	KER - 710, Recrystallised Alumina
<b>P3</b>	Kanthal AF
<b>P4</b>	Kanthal APM
<b>MQ</b>	Inconel 600

## 15. INNER PROTECTION TUBE SIZE

<b>T06</b>	Ø6 X 1.0 mm thk
<b>T08</b>	Ø8 X 1.5 mm thk
<b>T10</b>	Ø10 X 2.0 mm thk
<b>T12</b>	Ø12 X 2.0 mm thk
<b>T50</b>	Ø15 X 2.5 mm thk
<b>T20</b>	Ø20 X 2.5 mm thk
<b>T24</b>	Ø24 X 3.0 mm thk

## 16. PROCESS CONNECTION TYPE

<b>KW</b>	Adjustable connection
<b>KX</b>	Fixed connection

### ORDERING CODES

#### 17. PROCESS CONNECTION

<b>A25</b>	1.5" RF 150# as per ANSI B 16.5
<b>A26</b>	1.5" RF 300# as per ANSi B 16.5
<b>A27</b>	1.5" RF 600# as per ANSi B 16.5
<b>A31</b>	2" RF 150# as per ANSI B 16.5
<b>A32</b>	2" RF 300# as per ANSI B 16.5
<b>A33</b>	2" RF 600# as per ANSI B 16.5

A25

#### 18. PROCESS CONNECTION MATERIAL

<b>MB</b>	ASTM A 105 / Carbon Steel
<b>MF</b>	AISI 316 SS

MB

#### 19. OVERALL / EXPOSED LENGTH (OL)

**XXXX/XXXX** 50 mm up to 2,000 mm

500/300

OR

#### 19. INSERTION / EXPOSED LENGTH (IL)

**XXXX/XXXX** 50 mm up to 2,000 mm

400/300

#### 20. EXTENSION LENGTH (EL)

**XXX** 50 mm up to 250 mm

100

#### 21. OTHER OPTIONS

<b>TB</b>	Calibration Certificate
<b>XF</b>	Tag plate, AISI 304 SS
<b>KD</b>	SC, cable gland, Ni-brass WP
<b>KE</b>	DC, cable gland, Ni-brass WP
<b>KJ</b>	SC, cable gland, Ni-brass FP
<b>KK</b>	DC, cable gland, Ni-brass FP
<b>KF</b>	SC, cable gland, AISI 304 SS WP
<b>KG</b>	DC, cable gland, AISI 304 SS WP
<b>KL</b>	SC, cable gland, AISI 304 SS FP
<b>KM</b>	DC, cable gland, AISI 304 SS FP
<b>KH</b>	SC, cable gland, AISI 316 SS WP
<b>KI</b>	DC, cable gland, AISI 316 SS WP
<b>KN</b>	SC, cable gland, AISI 316 SS FP
<b>KO</b>	DC, cable gland, AISI 316 SS FP
<b>KB</b>	Plug fitting for CE, AISI 304 SS
<b>KC</b>	Plug fitting for CE, AISI 316 SS
<b>KU</b>	Plug fitting for CE, Aluminum
<b>KS</b>	SS base plate for transmitter
<b>KT</b>	Head mount transmitter

XX

### Ordering Example :

**T303-K-X7-P-V-U-MQ-M60-W24-BZ-ML-C0-MF-P7-T50-KW-A25-MB-500/300 or 400/300-100**

#### NOTES:

1. Other sheath diameters, connections are available, please contact factory for details.
2. WP = Weatherproof, FP = Flame proof, SC = Single Compression, DC = Double Compression, CE = Cable Entry
3. Transmitter output shall be 4...20 mA as standard, any other output required, please contact factory for details.