

## FEATURES

- Economical version
- Leak point reduction

## APPLICATION

- Instrument isolation
- Liquid & gas services

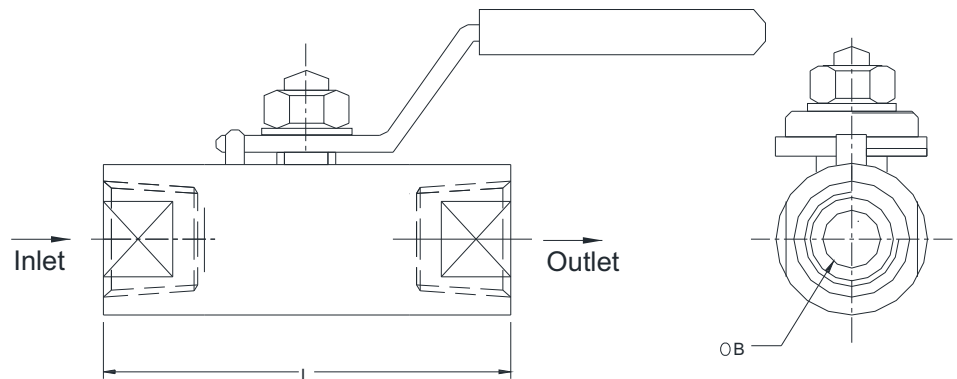
### Bolted Ball



### STANDARD SPECIFICATIONS

Stem type	: Bolted ball
Wetted parts	: AISI 316 SS
Instrument connection	: 1/2" NPT (F) / 1/2" BSP (F)
Seats & Seals	: PTFE
Process connection	: 1/2" NPT (F) / 1/2" BSP (F)
Stem	: Single bonnet
Max. working pressure	: 206.85 bar (3000 psi)
Max. working temperature	: 240°C
Handle	: CS plated with PVC sleeves

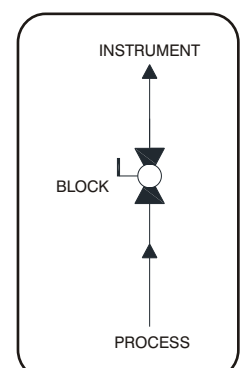
### DIMENSIONAL DRAWING



Inlet & Outlet Connections	Max. Pressure Capacity			
	6000 PSI		10000 PSI	
	L	ØB	L	ØB
1/4" (F x F)	58	6.4	65	6.4
3/8" (F x F)	60	8.5	68	8.5
1/2" (F x F)	75	11.5	80	11.5
3/4" (F x F)	80	19	85	19
1" (F x F)	87	25	95	25
1 1/4" (F x F)	112	32	125	32
1 1/2" (F x F)	120	38	135	38
2" (F x F)	130	50	150	50

All dimensions are in mm

### FLOW DIAGRAM



## ORDERING CODES

### 1. STEM TYPE

**BB** Bolted ball

**BB**

### 2. WETTED PARTS

**MB** Carbon Steel / ASTM A105  
**MC** AISI 304 SS  
**MF** AISI 316 SS  
**MG** AISI 316L SS  
**MM** Monel 400  
**MN** Monel K-500  
**MO** Hastelloy C-276

**MF**

### 4. INSTRUMENT CONNECTION

**11N** 1/8" NPT (M)  
**12N** 1/4" NPT (M)  
**13N** 3/8" NPT (M)  
**14N** 1/2" NPT (M)  
**11B** 1/8" BSP (M)  
**12B** 1/4" BSP (M)  
**13B** 3/8" BSP (M)  
**14B** 1/2" BSP (M)  
**01N** 1/8" NPT (F)  
**02N** 1/4" NPT (F)  
**03N** 3/8" NPT (F)  
**04N** 1/2" NPT (F)  
**01B** 1/8" BSP (F)  
**02B** 1/4" BSP (F)  
**03B** 3/8" BSP (F)  
**04B** 1/2" BSP (F)

**04N**

### 5. STEM PACKING

**P** PTFE  
**G** Grafoil

**P**

### 6. PROCESS CONNECTION

**11N** 1/8" NPT (M)  
**12N** 1/4" NPT (M)  
**13N** 3/8" NPT (M)  
**14N** 1/2" NPT (M)  
**11B** 1/8" BSP (M)  
**12B** 1/4" BSP (M)  
**13B** 3/8" BSP (M)  
**14B** 1/2" BSP (M)  
**01N** 1/8" NPT (F)  
**02N** 1/4" NPT (F)  
**03N** 3/8" NPT (F)  
**04N** 1/2" NPT (F)  
**01B** 1/8" BSP (F)  
**02B** 1/4" BSP (F)  
**03B** 3/8" BSP (F)  
**04B** 1/2" BSP (F)

**04N**

### 7. OTHER OPTIONS

**TN** Tested to NACE standards  
**TO** Certification for Oxygen service  
**TM** Material test certificate 2.2  
**TH** Hydro test certificate  
**TC** Material test certificate 3.1  
**XL** Marking by laser

**XL**

**Ordering Example : V201-BB-MF-04N-P-04N-XL**

#### NOTES:

- Other connections are available, please contact factory for details.
- Valve stem dust covers shall be identified with color codes according to their function as ; Blue = ISOLATE