

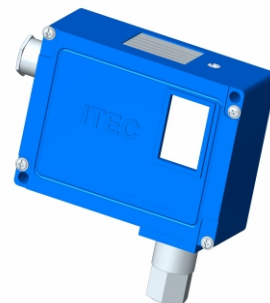
FEATURES

- Fix / adjustable differential
- Field adjustable set point
- Weatherproof to IP 67
- Internal set point lock
- Rigid construction
- Scale provided

APPLICATION

- Marine applications
- Textile machineries
- Power & steel plants
- Furnace applications
- Oil & Gas, Refineries
- Petro-chemicals & Fertilizers
- Cement & Glass industries
- Railway engines & Turbines

High Pressure



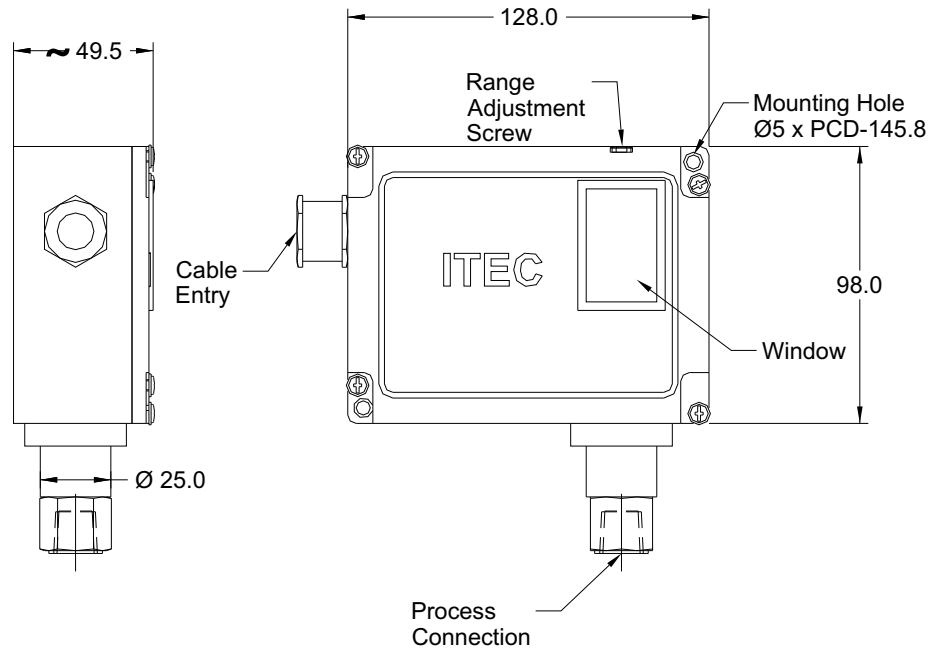
STANDARD SPECIFICATIONS

| | | |
|-----------------------------|---|--|
| Repeatability | : | ± 1 % F.S |
| Scale accuracy | : | ± 3% F.S |
| Measurement unit | : | bar |
| Range | : | Refer "Range Table" |
| Range adjustment | : | External |
| Differential | : | Fixed (Standard), Adjustable (Optional) |
| Mounting | : | Bottom / Panel |
| Enclosure material | : | Aluminum pressure die cast |
| Sensing elements | : | SS 316 Piston |
| Switch | : | 1 SPDT Snap action micro switch |
| Switch rating | : | 15A,250 VAC / 0.2A,24 VDC (Standard) |
| Process connection | : | 1/4" NPT (F) |
| Maximum process temperature | : | 150 °C |
| Ambient temperature | : | -10...60 °C |
| Cable entry | : | PG.13.5 mm |
| Set point | : | Between 20 to 80 % F.S for better performance |
| High voltage strength | : | 0.5 to 0.6 KV between open contacts and 2 K V between contact and body |

RANGE TABLE

| CODE | RANGE |
|------|----------|
| | "bar" |
| B17 | 5...60 |
| B19 | 10...100 |
| B21 | 20...160 |
| B24 | 25...250 |
| B27 | 40...400 |

DIMENSIONAL DRAWING



All dimensions are in mm

MICROSWITCH SPECIFICATION

| DESCRIPTION | RATING | | DIFFERENTIAL | TYPE | SWITCH CODE | |
|---------------------------------------|--------------------------------|--------------------------------|--------------|------|-------------|--------|
| | AC | DC | | | 1 No. | 2 Nos. |
| Low deadband / differential | 15A/250V, 2A/24V 0.2A/220V | 15A/250V, 2A/24V 0.2A/220V | Fix | SPDT | M10 | M20 |
| High dead band / differential | 15A/250V, 6A/24V 0.25A/220V | 15A/250V, 5A/24V 0.03A/220V | Adjustable | SPDT | M11 | - |
| Gold plated switch | 1A/250V | 0.5A/28V | Fix | SPDT | M13 | M23 |
| Environmentally sealed silver contact | 5A/28V | - | Fix | SPDT | M14 | M24 |
| Hermetically sealed silver contact | 3A/28V | 2A/24V | Fix | SPDT | M16 | - |
| Hermetically sealed gold contact | 1A/125V | - | Fix | SPDT | M17 | - |
| DPDT | 10A/125V, 0.2A/250V | - | Fix | DPDT | M08 | - |

ORDERING CODES

| | | | |
|---|------------|---|------------|
| 1. RANGE | B19 | 9. PROCESS CONNECTION⁴ | 02B |
| Refer "Range Table" | | 02B 1/4" BSP (F) | |
| 2. CHAMBER MATERIAL | NF | 12B 1/4" BSP (M) | |
| NF AISI 316 SS | | 13B 3/8" BSP (M) | |
| 3. SENSING ELEMENT MATERIAL | MF | 14B 1/2" BSP (M) | |
| MF AISI 316 SS | | 02N 1/4" NPT (F) | |
| 5. SWITCHING DIFFERENTIAL | S4 | 12N 1/4" NPT (M) | |
| S4 Fixed | | 14N 1/2" NPT (M) | |
| S5 Adjustable | | 04N 1/2" NPT (F) | |
| 6. SET POINT | S8 | A25 1 1/2" RF 150# | |
| S8 On Raising | | A26 1 1/2" RF 300# | |
| S9 On Falling | | A27 1 1/2" RF 600# | |
| 7. MICROSWITCH TYPE | M10 | A31 2" RF 150# | |
| Refer table "Microswitch Specification" | | A32 2" RF 300# | |
| 8. CABLE ENTRY | J8 | A33 2" RF 600# | |
| J8 PG 13.5 cable entry | | 10. OTHER OPTIONS | XX |
| J9 DIN connector | | TB Calibration Certificate | |
| C1 1/2" NPT (F) | | XF AISI 304 SS tag plate | |
| C4 4 Pin Connector | | XV Wall mounting bracket | |
| C7 7 Pin Connector | | XS Mounting bracket with 2" U-clamp | |
| | | TC Material test certificate 3.1 | |
| | | KE Cable gland, double compression weatherproof, Ni-plated brass | |

Ordering Example : S203-B19-NF-MF-S4-S8-M10-J8-02B

COMPATIBLE ACCESSORIES

| | | |
|----------------|------------|---------------|
| Diaphragm seal | Gauge cock | Needle Valves |
| Cooling tower | Snubber | Manifolds |
| Siphon | | |

NOTES:

1. Except "Standard" connection, other connections are given through adaptors.
2. The option "TC" covers only wetted parts.
3. Cable gland is available in other materials, contact factory.
4. Connections are through adaptors.