

## FEATURES

- Weld-Pad connection
- Mineral insulated
- Exchangeable insert
- Spring loaded design

## APPLICATION

- Surface temperature
- Measurement of Heater tubes on flat surfaces
- Power & Utilities

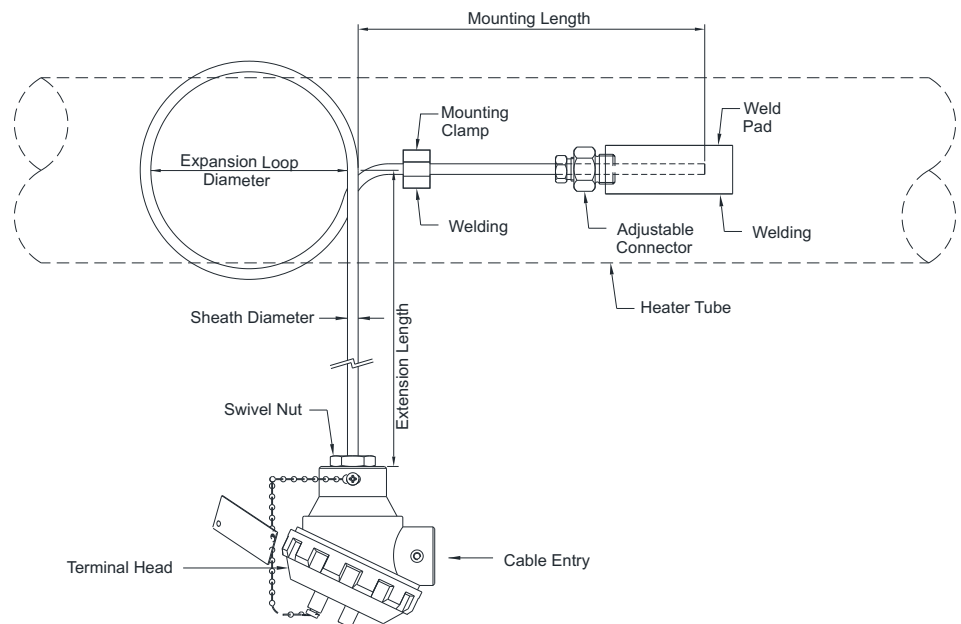
### Weld-pad Mounting



### STANDARD SPECIFICATIONS

Element	:	Pt-100, class B
Range	:	-200...400°C
Wire combination	:	Simplex, 3 Wire
Sheath material	:	AISI 316 SS
Sheath diameter	:	6.0 mm
Head enclosure	:	Weatherproof, IP 65, threaded cover
Enclosure material	:	Die-cast aluminum
Cable entry	:	3/4" ET (F), 1 No.
Mounting type	:	Bracket Mounting for Head
Weld pad size	:	50 mm X 25 mm X 25 mm
Weld pad material	:	AISI 316 SS
Total length	:	350 mm

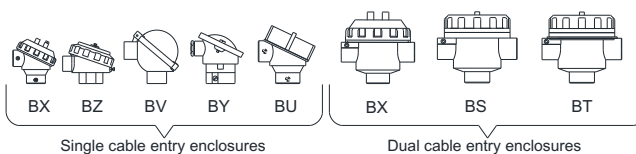
### DIMENSIONAL DRAWING



NOTE :- TOTAL LENGTH = Extension Length + Perimeter of Expansion Loop + Mounting Length

## REFERENCE

IEC-751 / DIN 43760



## ORDERING CODES

## 1. ELEMENT

<b>0</b>	Pt100, class A	<b>1</b>	Pt100, class B
<b>2</b>	Pt500, class A	<b>3</b>	Pt500, class B
<b>4</b>	Pt1000, class A	<b>5</b>	Pt1000, class B

## 2. RANGE

<b>97C</b>	-200...400°C	<b>98C</b>	0...600°C
------------	--------------	------------	-----------

## 3. WIRE COMBINATION

<b>A</b>	Simplex, 2-Wire	<b>C</b>	Simplex, 3-Wire
<b>D</b>	Simplex, 4-Wire	<b>F</b>	Duplex, 2-Wire
<b>H</b>	Duplex, 3-Wire	<b>I</b>	Duplex, 4-Wire

## 4. SHEATH MATERIAL

<b>MF</b>	AISI 316 SS	<b>MG</b>	AISI 316L SS
-----------	-------------	-----------	--------------

## 5. SHEATH DIAMETER

<b>M30</b>	3.0 mm <sup>2</sup>	<b>M50</b>	5.0 mm
<b>M60</b>	6.0 mm	<b>M80</b>	8.0 mm

## 6. HEAD ENCLOSURE

<b>BZ</b>	WP, IP 65, threaded cover
<b>BX</b>	WP, IP 67, threaded cover
<b>BS</b>	Flame proof, IP 67, Gr IIA, IIB
<b>BT</b>	Explosion proof, IP 67, Gr IIC
<b>BV</b>	WP, IP 65, Hinged type
<b>BY</b>	WP, IP 65, cover fitted with 2 screws
<b>BU</b>	Ex-Proof to CSA,FM,ATEX [EEx-d]

## 7. ENCLOSURE MATERIAL

<b>ML</b>	Die-cast aluminum		
<b>MC</b>	AISI 304 SS	<b>MF</b>	AISI 316 SS

## 8. CABLE ENTRY

<b>C0</b>	3/4" ET (F), 1 No.
<b>C1</b>	1/2" NPT (F), 1 No.
<b>C2</b>	M20 x 1.5mm (F), 1 No.
<b>C3</b>	3/4" NPT (F), 1 No.
<b>C5</b>	3/4" ET (F), 2 Nos.
<b>C6</b>	1/2" NPT (F), 2 Nos.
<b>C8</b>	M20 x 1.5mm (F), 2 Nos.
<b>C9</b>	3/4" NPT (F), 2 Nos.

## 9. MOUNTING TYPE

<b>B0</b>	Local mounting, no bracket
<b>B1</b>	Bracket mounting, for head
<b>B2</b>	2" Pipe mounting bracket
<b>B3</b>	Surface mounting, for JB

## 10. WELD PAD / INTEGRAL COLLAR SIZE

<b>W0</b>	Rectangle, 100 x 25 x 25 mm
<b>W1</b>	Rectangle, 100 x 50 x 50 mm
<b>W2</b>	Rectangle, 50 x 25 x 25 mm
<b>W4</b>	Integral collar, 30 x 19 x 10 mm
<b>W5</b>	Integral collar, 40 x 19 x 10 mm
<b>W6</b>	Integral collar, 50 x 19 x 10 mm

## 11. WELD PAD MATERIAL

<b>MF</b>	AISI 316 SS
<b>ME</b>	AISI 310 SS
<b>M6</b>	AISI 446 SS
<b>MQ</b>	Inconel 600

## 12. TOTAL LENGTH (TL)

<b>XXXXX</b>	50 mm up to 25,000 mm
--------------	-----------------------

## 13. OTHER OPTIONS

<b>TB</b>	Calibration Certificate
<b>XF</b>	Tag plate, AISI 304 SS
<b>KD</b>	SC, cable gland, Ni-brass WP
<b>KE</b>	DC, cable gland, Ni-brass WP
<b>KJ</b>	SC, cable gland, Ni-brass FP
<b>KK</b>	DC, cable gland, Ni-brass FP
<b>KF</b>	SC, cable gland, AISI 304 SS WP
<b>KG</b>	DC, cable gland, AISI 304 SS WP
<b>KL</b>	SC, cable gland, AISI 304 SS FP
<b>KM</b>	DC, cable gland, AISI 304 SS FP
<b>KH</b>	SC, cable gland, AISI 316 SS WP
<b>KI</b>	DC, cable gland, AISI 316 SS WP
<b>KN</b>	SC, cable gland, AISI 316 SS FP
<b>KO</b>	DC, cable gland, AISI 316 SS FP
<b>KB</b>	Plug fitting for CE, AISI 304 SS
<b>KC</b>	Plug fitting for CE, AISI 316 SS
<b>KU</b>	Plug fitting for CE, Aluminum
<b>KS</b>	SS base plate for transmitter
<b>KT</b>	Head mount transmitter

Ordering Example : R301-1-97C-C-MF-M60-BZ-ML-C0-B1-W2-MF-350

## NOTES:

- Other sheath diameters, materials and connections are available, please contact factory for details.
- Not available in Double, 4-Wire combinations.
- WP = Weatherproof, FP = Flame proof, SC = Single Compression, DC = Double Compression, CE = Cable Entry, JB = Junction Box.
- Transmitter output shall be 4...20 mA as standard, any other output required, please contact factory for details.