

FEATURES

- Saddle type flange
- Laser welded diaphragm
- Optional exotic materials

APPLICATION

- Separation systems
- Isolation applications
- Viscous & corrosive media
- High-pressure applications
- High vibration application

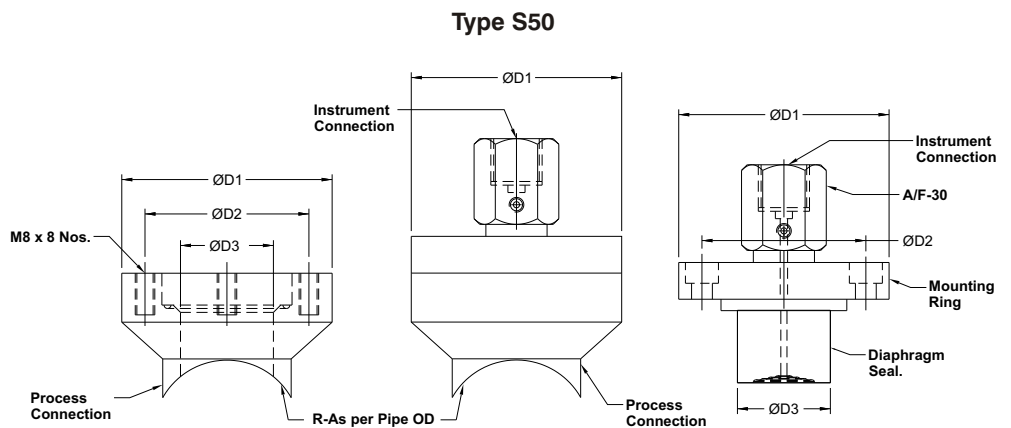
Saddle / In-line Mounting



STANDARD SPECIFICATIONS

Range type	: 6...250bar
Top chamber material	: AISI 316 SS
Diaphragm	: AISI 316L SS
Gaskets	: PTFE
Saddle Flange material	: AISI 316L SS
Instrument connection	: 1/2" NPT (F) / 1/2" BSP (F)
Sealing fluid	: Silicon DC 200 (-40...205°C)
Process connection	: To weld on pipe (Saddle)
Assembly	: Direct

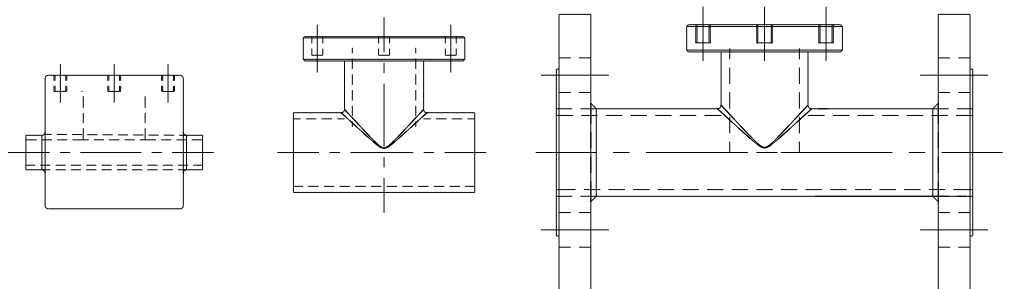
DIMENSIONAL DRAWING



DN	ØD1	ØD2	ØD3	R
1 1/2" (40)	86	67	38.5	24.15
2" (50)	86	67	38.5	30.16
3" (80)	98	81	40.5	44.45
4" (100)	98	81	55	57.10

All dimensions are in mm.

OTHER MOUNTING STYLES (REFER MODEL A305)



ORDERING CODES

1. RANGE TYPE		S50	8. PROCESS CONNECTION		25
S50 6...250bar			25 2.5" pipe		
2. CHAMBER MATERIAL		LC	03 3.0" pipe		
LC AISI 304 SS			04 4.0" pipe		
LF AISI 316 SS			05 5.0" pipe		
LG AISI 316L SS			06 6.0" pipe		
3. DIAPHRAGM MATERIAL		DG	08 8.0" pipe		
DG AISI 316L SS			10 10" pipe		
DM Monel 400			12 12" pipe		
DO Hastelloy C-276			14 14" pipe		
DQ Inconel 600			9. ASSEMBLY		B8
DV Titanium			B8 Direct		
DW Tantalum			B9 Remote (capillary)		
4. GASKETS		RP	10. CAPILLARY		XX
RP PTFE			OU AISI 304 SS		
RM Metal			OV AISI 316 SS		
5. SADDLE FLANGE MATERIAL		NF	11. ARMOUR		OX
NC AISI 304 SS			OX AISI 304 SS		
NF AISI 316 SS			OY AISI 316 SS		
6. INSTRUMENT CONNECTION		04N	OZ PVC (Ambient max. 60°C)		
03B 3/8" BSP (F)			12. REMOTE MOUNTING LENGTH		XXXX
04N 1/2" NPT (F)			XXXX 2000 mm up to 6000 mm		
02B 1/4" BSP (F)			13. OTHER OPTIONS		XX
04B 1/2" BSP (F)			XZ Dry seal		
02N 1/4" NPT (F)			HL Helium leak test		
7. SEALING FLUID		OA	TM Material test certificate 2.2		
OA Silicon DC 200 [-40°C to 205°C]			TC Material test certificate 3.1		
OI Syltherm 800 [-40°C to 315°C]					
OL Silicon DC 710 [7°C to 371°C]					

Ordering Example : D403-S50-LC-DG-RP-NF-04N-OA-25-B8

APPLICABLE ACCESSORIES

A305 WELD-IN CONNECTIONS

NOTES:

1. Other sealing liquids are available, contact factory for further details.
2. All metal diaphragms are laser welded to the Top Chamber.

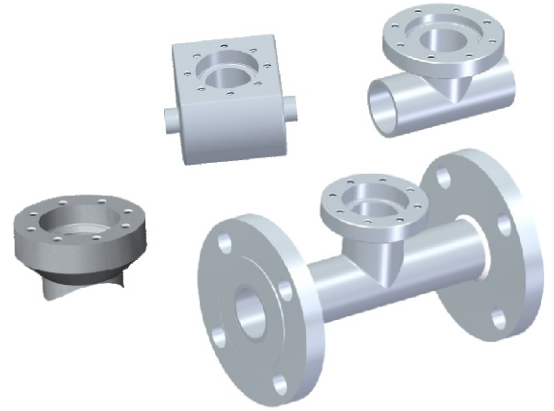
FEATURES

- Saddle flange design
- Weld-in run pipe designs
- Optional exotic materials

APPLICATION

- For diaphragm seal mounting

Saddle / In-line / Flanged connections

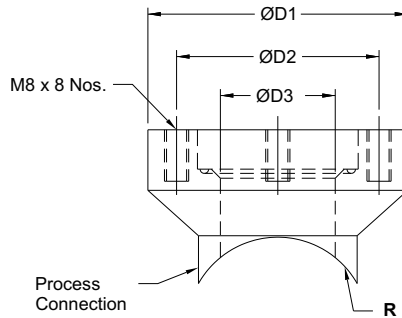


STANDARD SPECIFICATIONS

Type	:	Saddle / Run-pipe / Flanged
Material	:	AISI 316 SS
Process connection / Pipe size	:	1½" pipe
Process connection flange	:	1½" RF 150# as per ANSI B 16.5 (Flanged)

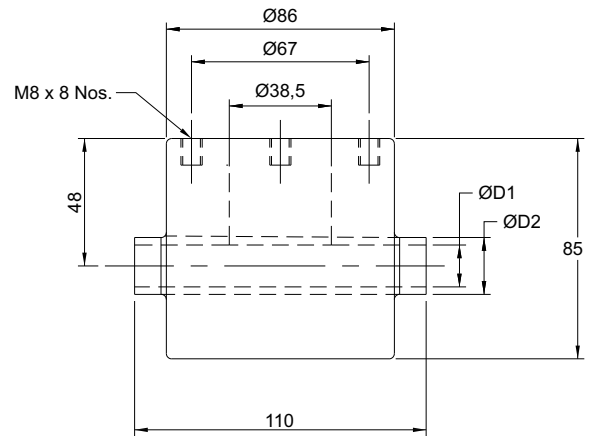
DIMENSIONAL DRAWING

Type E61



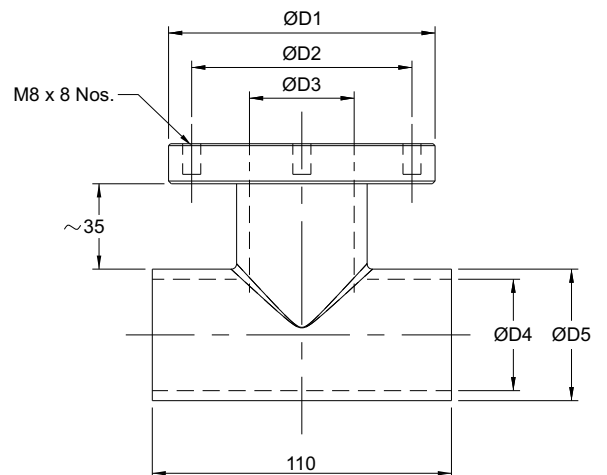
DN	ØD1	ØD2	ØD3	R
1 1/2" (40)	86	67	38.5	24.15
2" (50)	86	67	38.5	30.16
3" (80)	98	81	40.5	44.45
4" (100)	98	81	55	57.10

Type E62



DS	ØD1	ØD2
1/2" (15)	15.8	21.4
3/4" (20)	20.9	26.7
1" (25)	26.6	33.4

Type E63

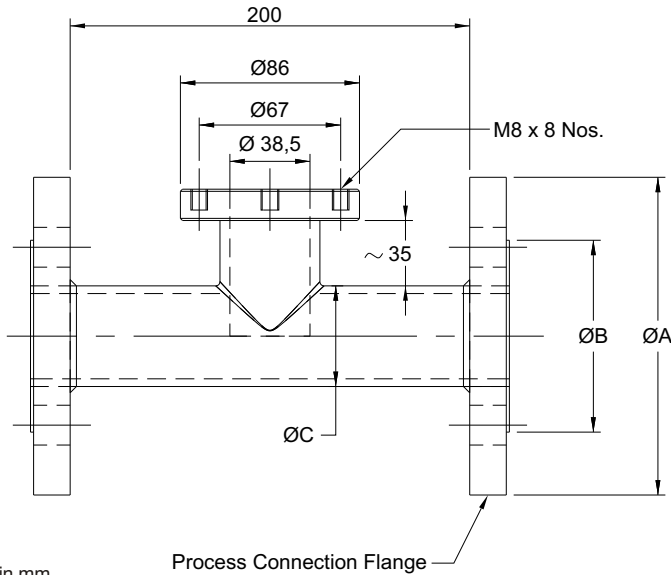


DN	ØD1	ØD2	ØD3	ØD4	ØD5
1 1/2" (40)	86	67	38.5	40.9	48.3
2" (50)	86	67	38.5	52.5	60.3
3" (80)	98	81	40.5	77.9	88.9
4" (100)	98	81	55	102.3	114.3

All dimensions are in mm.

DIMENSIONAL DRAWING

Type E64



FLANGE		ØA	ØB	ØC
Size	Rating			
1 1/2"	150	127	73	48.3
1 1/2"	300	155	73	48.3
1 1/2"	600	155	73	48.3
2"	150	152	92.1	60.4
2"	300	165	92.1	60.4
2"	600	165	92.1	60.4

All dimensions are in mm.

ORDERING CODES

1. TYPE

- E61** Saddle connection
- E62** Run-pipe connection (1/2" to 1")
- E63** Run-pipe connection (1" & above)
- E64** Flanged connection (1 1/2" & above)

2. MATERIAL

- LF** AISI 316 SS
- LG** AISI 316L SS

3. PROCESS CONNECTION / PIPE SIZE

- 050** 1/2" pipe
- 075** 3/4" pipe
- 010** 1" pipe
- 150** 1 1/2" pipe
- 020** 2" pipe
- 025** 2 1/2" pipe
- 003** 3" pipe
- 004** 4" pipe
- 005** 5" pipe
- 006** 6" pipe
- 008** 8" pipe
- 100** 10" pipe
- 120** 12" pipe
- 140** 14" pipe

Note : All pipes are Sch 40 as standard.

AND

3. PROCESS CONNECTION FLANGE

- A25** 1 1/2" RF 150#
- A26** 1 1/2" RF 300#
- A27** 1 1/2" RF 600#
- A31** 2" RF 150#
- A32** 2" RF 300#
- A33** 2" RF 600#
- D42** DN40 PN10
- D43** DN40 Pn16
- D44** DN40 PN25
- D52** DN50 PN10
- D53** DN50 PN16
- D54** DN50 PN25

4. OTHER OPTIONS

- TM** Material test certificate 2.2
- TC** Material test certificate 3.1

E61

LF

150

XXX

XX

Ordering Example : A305-E61-LF-150

NOTES:

- While selecting S64 as the type, please do select the "PIPE SIZE" & "PROCESS CONNECTION FLANGE".
- Hardware items are not part of the standard supply, please contact factory for details.