

FEATURES

- All SS measuring system
- Socket-case, direct welded
- Dry / liquid filled

APPLICATION

- Food & Beverages
- Chemical & Petrochemical
- Corrosive environments
- Liquid & gaseous mediums

Bourdon Tube, \geq DN100



STANDARD PARAMETERS

Accuracy	: CL 1.6
Ambient temperature	: -40...+65°C (without dampening liquid)
	: -20...+65°C (with dampening liquid)
Service temperature	: 300°C max.
Pressure limits	: Steady pressure up to FS value
	: Fluctuating pressure up to 90% of FS value
	: Short time 1.3 x FS value for range up to 100 bar
	: Short time 1.15 x FS value for range above 100 bar
Weld joints	: TIG argon arc welding

MATERIAL OF CONSTRUCTION

Sensing element	: Bourdon Tube (\leq 100 bar : C - type , $>$ 100 bar : Helical)
Case & Ring material	: AISI 304 SS (Bayonet type)
Bourdon tube & Shank	: AISI 316L SS (Shank welded directly to case)
Movement mechanism	: AISI 304 SS
Dial	: Aluminum, black graduation on white background
Pointer	: Fixed, aluminum, black powder coated
Gaskets, Blow off disc & filling plug	: Neoprene
Window	: Plexi glass

STANDARD SPECIFICATIONS

Dial size	: DN50 / DN63 / DN80 / DN100
Range	: -1...400 bar (DN500), -1...1,000 bar (DN 63 / DN80 / DN100)
Mounting pattern	: Direct, Bottom connection
Process connection	: 1/4" NPT (M)
Ingress protection	: IP 54 / IP 65
Execution	: Dry / Dry but fillable, glycerin

STANDARD SPECIFICATIONS : DAMPENING LIQUID FILLED, GLYCERIN

Window	: Plexi glass
Dampening liquid	: Glycerin 99.7% [Service temperature up to 65°C]

TEMPERATURE EFFECT

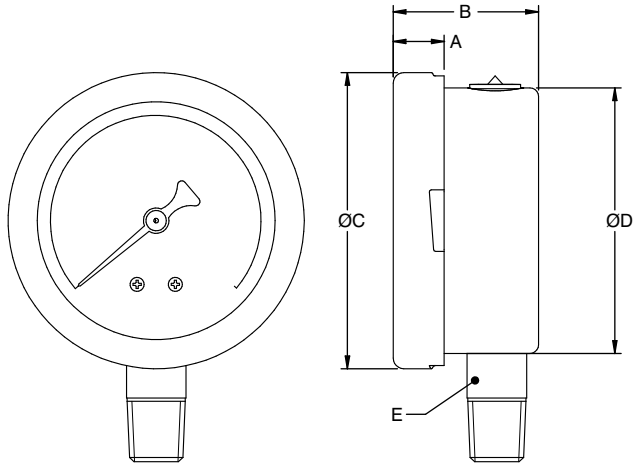
When temperature of the measuring system deviates from reference temperature (+20°C) max error $\pm 0.4\%$ / 10K of true scale value.

REFERENCE

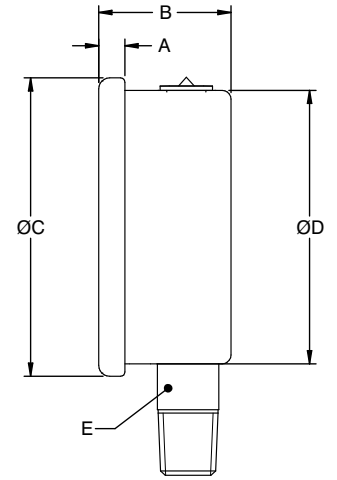
EN 837-1

DIMENSIONAL DRAWING

Type B0 (Bayonet ring)



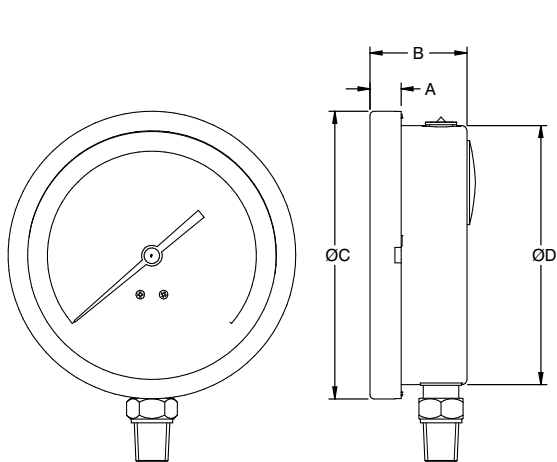
Type B0 (Rolling ring)



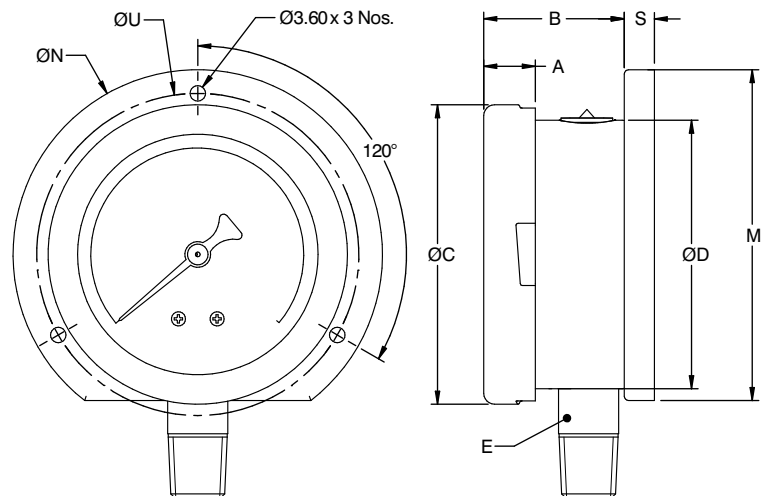
DN	A	B	ØC	ØD	E	Weight (grams)
50	9	34	58.5	52	SQ.14	120
63	12	33	69.7	62.5	SQ.14	209

DN	A	B	ØC	ØD	E	Weight (grams)
50	5	32.5	57.5	51.5	SQ.14	110
63	5	31.5	68	62.5	SQ.14	189

Type B0 (Bayonet ring)



Type B1 (Bayonet ring)

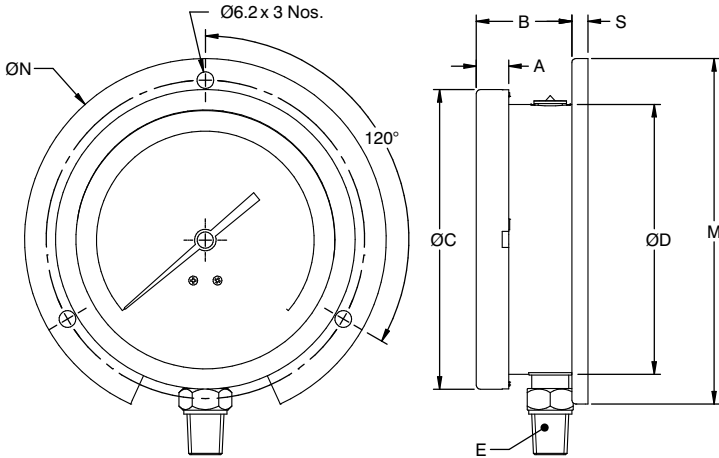


DN	A	B	ØC	ØD	E	Weight (grams)
80	9.5	33.5	89.5	80	A/F14	450
100	12	38	111	100	A/F14	500

DN	A	B	ØC	ØD	E	ØN	ØU	M	S	Weight (grams)
63	12	33	69.7	62.5	SQ.14	86	75	77	7	254

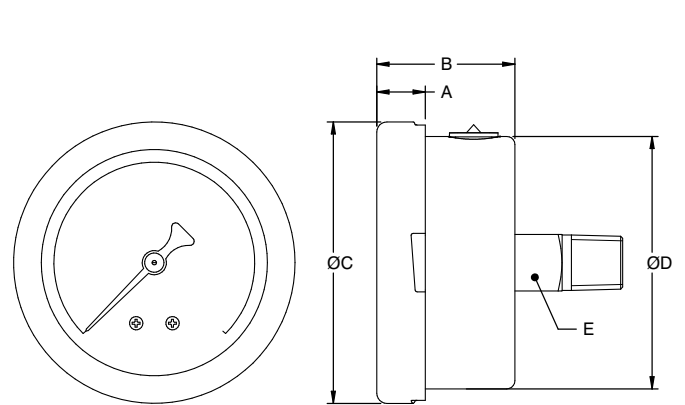
DIMENSIONAL DRAWING

Type B1 (Bayonet ring)



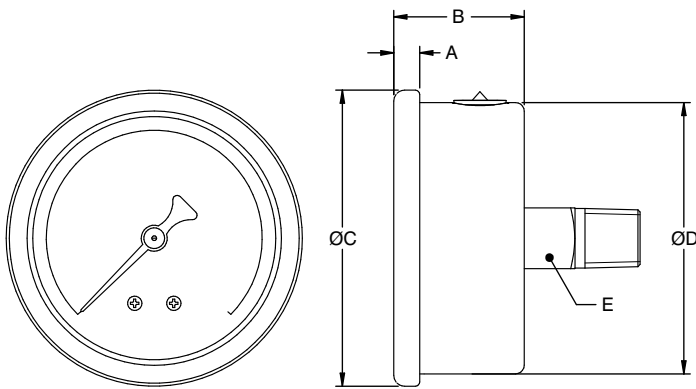
DN	A	B	ØC	ØD	E	ØN	ØU	M	S	Weight (grams)
100	12	38	111	100	A/F14	134	118	128	6	607

Type R0 (Bayonet ring)



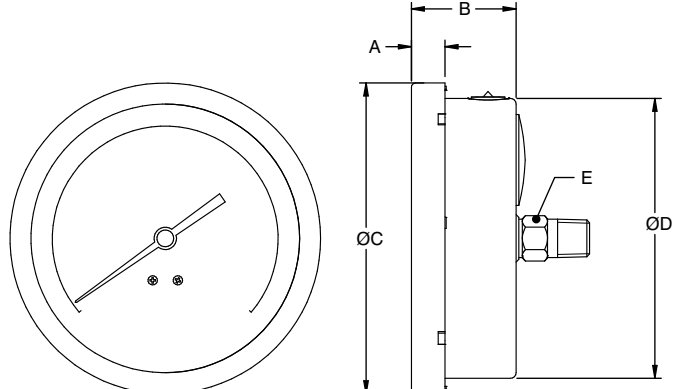
DN	A	B	ØC	ØD	E	Weight (grams)
50	9	34	58.5	52	SQ.14	120
63	12	33	69.7	62.5	SQ.14	209

Type R0 (Rolling ring)



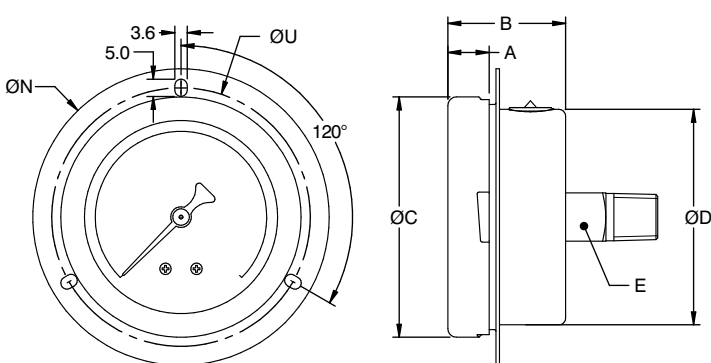
DN	A	B	ØC	ØD	E	Weight (grams)
50	5	32.5	57.5	51.5	SQ.14	110
63	5	31.5	68	62.5	SQ.14	189

Type R0 (Bayonet ring)



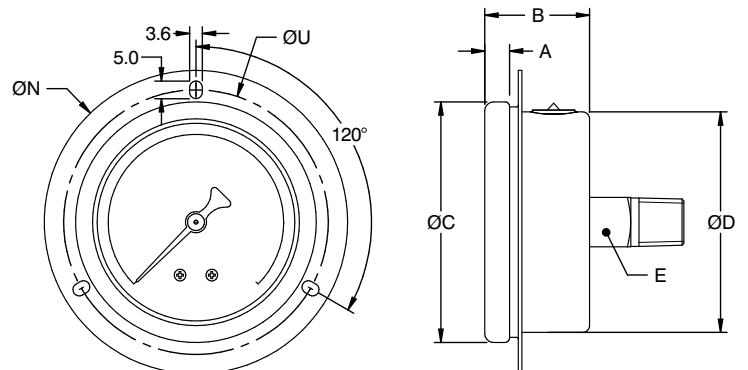
DN	A	B	ØC	ØD	E	Weight (grams)
80	9.5	33.5	89.5	80	A/F14	450
100	12	38	111	100	A/F14	500

Type R2 (Bayonet ring)



DN	A	B	ØC	ØD	E	ØN	ØU	Weight (grams)
63	12	33	69.7	62.5	SQ.14	86	75	240

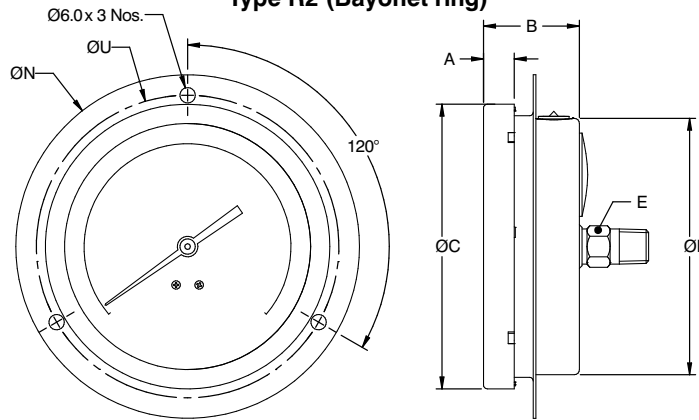
Type R2 (Rolling ring)



DN	A	B	ØC	ØD	E	ØN	ØU	Weight (grams)
63	5	31.5	68	62.5	SQ.14	86	75	189

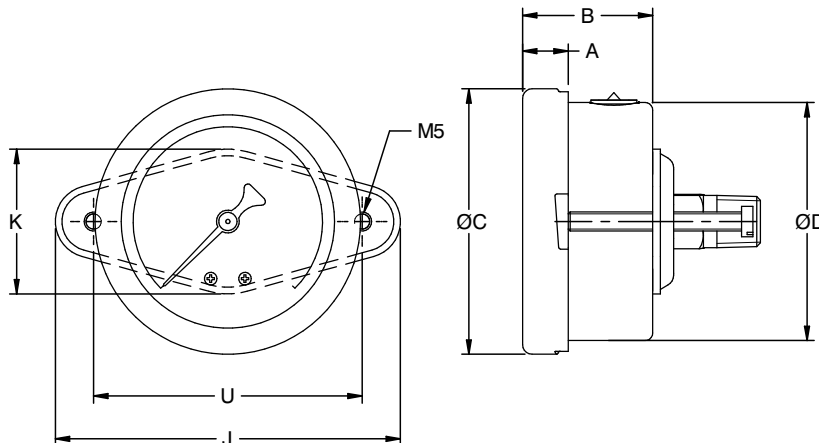
DIMENSIONAL DRAWING

Type R2 (Bayonet ring)



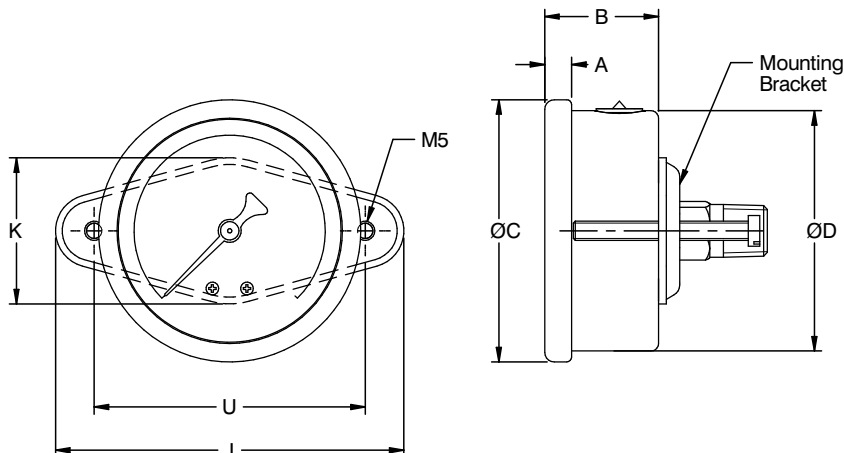
DN	A	B	ØC	ØD	E	ØN	ØU	Weight (grams)
100	12	38	111	100	A/F 14	134	118	574

Type R3 (Bayonet ring)



DN	A	B	ØC	ØD	E	U	J	K	Weight (grams)
50	9	34	58.5	51	SQ. 14	70.5	91	38	163
63	12	33	69.7	62.5	SQ.14	70.5	91	38	254

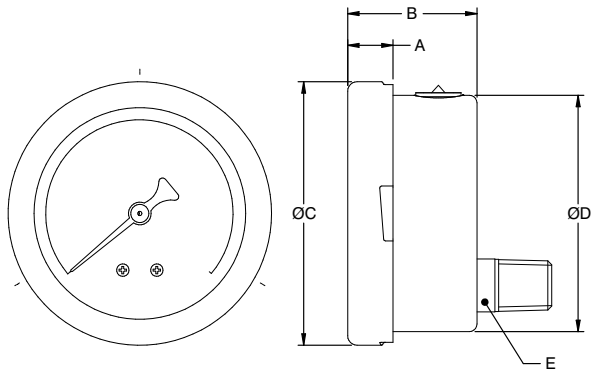
Type R3 (Rolling ring)



DN	A	B	ØC	ØD	E	U	J	K	Weight (grams)
50	9	34	58.5	51	SQ. 14	70.5	91	38	163
63	12	33	69.7	62.5	SQ.14	70.5	91	38	254

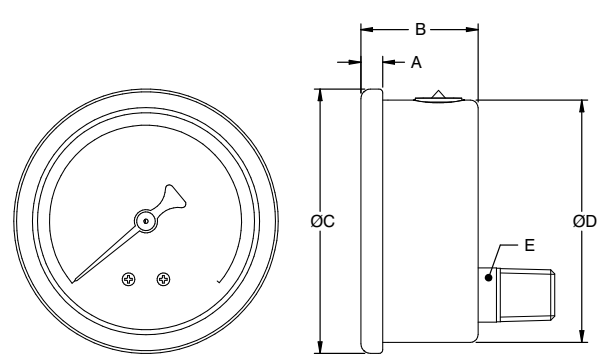
DIMENSIONAL DRAWING

Type L0 (Bayonet ring)



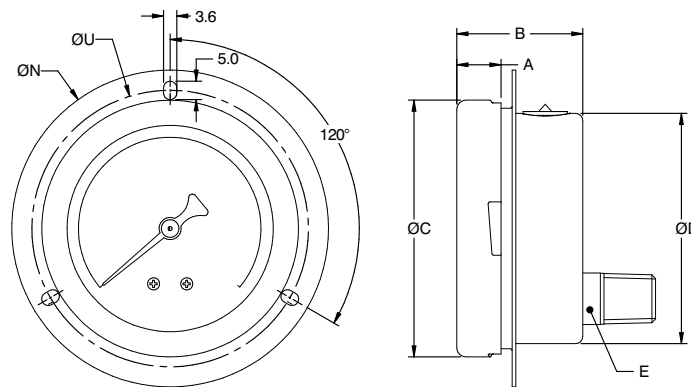
DN	A	B	ØC	ØD	E	Weight (grams)
63	12	33	69.7	62.5	SQ.14	209

Type L0 (Rolling ring)



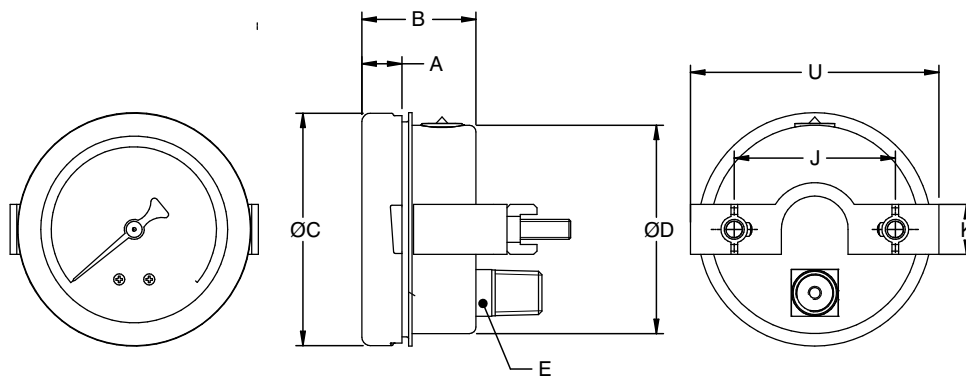
DN	A	B	ØC	ØD	E	Weight (grams)
63	5	31.5	68	62.5	SQ.14	189

Type L1 (Bayonet ring)



DN	A	B	ØC	ØD	E	ØN	ØU	Weight (grams)
63	12	33	69.7	62.5	SQ.14	86	75	240

Type L2 (Bayonet ring)



DN	A	B	ØC	ØD	E	U	J	K	Weight (grams)
63	12	33	69.7	62.5	SQ.14	74.5	45.5	15	376

NOTES

1. DN80, DN100 mounted through adaptors to the case.